



### Pope Leo XIV

*"The Lenten season offers the faithful the opportunity to let the Lord cleanse them, cooperate better with God, and, in doing so, craft their lives as unique masterpieces."*



Dear Parents and Carers,

Mother figures are warmly invited to Mother Figure morning this Friday for a short assembly and time in class. This annual event is definitely worth attending if you are able and we look forward to seeing you there!

Please continue to send us cardboard boxes – we have been able to collect plenty this week, but will always need more!

Another reminder to please also support us in our drive to donate to the Ipswich Hygiene Bank. We are nominating Friday as our donation day, but the donation bin has already started to be filled!

Well done to our Year 3 Girl's football team, who had a competition today – it sounds like they all thoroughly enjoyed themselves.

Information will be coming out via Arbor next week regarding Parent Consultation bookings – please note we are no longer using SchoolCloud as our booking platform.

Wishing everyone a lovely weekend.

Kind regards,

Mr McGill and Mrs Berry

### Our Gospel Values

Creativity

Courage

Forgiveness

✠ Generosity ✠

Humility

Joy

Perseverance

Stewardship

### Executive Headteacher

Mrs Berry

### Head of School

Mr McGill

### SENCO

Mr Bentley

### Our Classes

Rainbows Miss Aldous  
Mrs Iannelli

Celestial Mrs Thackeray  
Ms Abbott  
Mrs Durston

Class 3 Mr Rolfe  
Mrs Harvey  
Mrs Nwafor

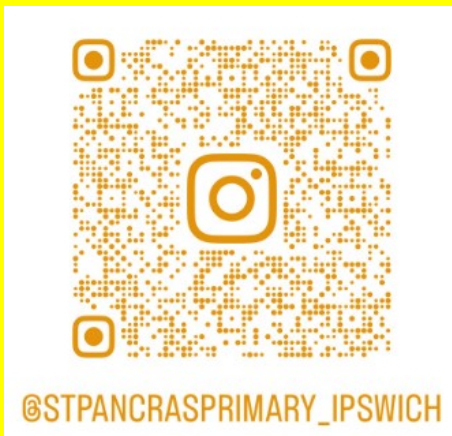
Class 4 Mrs Crowther  
Mrs Katkuniene

Class 5 Miss  
Pursehouse

Ms Borley

Class 6 Mrs Jones  
Mrs Smith  
Mrs Tella

**Please follow our newly resurrected Instagram page. Content will be posted regularly to here and Facebook!**



### Sustainability focus of the week:

To reduce food waste, during Food waste week.



# SPRING TERM DATES

Below are some key dates for the diary

10th March—Science day

12th March—Rainbows and Celestial attending 10am Mass

13th March—Mother Figure morning

13th March—Hygiene Bank Donation day

13th March—Y4 Robotics workshop at Woodbridge School

19th March—Y4 attending 10am Mass

24th and 26th March—Parent Consultation Evenings

26th March—Year 4 attending 10am Mass / Passion performance to parents -14:00

27th March—House point prize for winning house—film afternoon

16th April—Sponsored athletics event (information to follow!)

11th-14th May—Y6 SATs week

18th May—Y5 at St Albans for Creativity Day/Y6 Duxford trip

21st May—Outdoor Classroom day

3rd-5th June—Y6 residential

# ADMISSION APPEALS PANEL MEMBERS

## Volunteers Sought to Support School Admission Appeals

The Diocese of East Anglia Schools' Service is seeking volunteers to serve as school admission appeals panel members, helping ensure parents' rights are upheld when a child is not offered a place at their preferred Catholic school.

Panel members play a vital role in considering cases where parents wish to challenge a refusal of admission. Each hearing typically lasts between 20 and 30 minutes, although some may take longer depending on their complexity. During the busy summer term, multiple appeals may be scheduled on the same day, and volunteers may occasionally be asked to sit for two or even three consecutive days. Importantly, panel members are always able to decide their own availability, making this a flexible opportunity suited to those available during school hours.

Appeals may be heard in person or via video conferencing, and volunteers can express a preference for the type of hearings they are comfortable with. All panel members will receive training from the Diocese.

To ensure a balanced and fair process, each panel is made up of both lay members, people without professional involvement in education, and education members, people with experience working in or understanding schools. Individuals cannot sit on panels for schools with which they have a personal connection, for example being a parent, governor or staff member.

Anyone interested in volunteering or finding out more is invited to contact Helen Bates, Assistant Director (Schools' Service), at the Diocese of East Anglia, 21 Ugate, Poringland, Norwich, NR14 7SH, by email at [ssc@rcdea.org.uk](mailto:ssc@rcdea.org.uk) or by telephone on **01508 495509**.

# HYGIENE BANK

We are proud to support The Hygiene Bank and are asking for parental support on Friday 13th March. Please bring in any donations of hygiene products to support those in need!



## ONLINE SAFETY NEWS

Jenny is a mother with two teenage girls who feels the pressure of keeping up to date with online safety, new app settings and more the same as other parents. In this article and YouTube video jenny shares how she uses app-level parental controls to manage social media use across her daughters' phones and tablets.

<https://www.internetmatters.org/hub/parent-stories/how-i-use-app-parental-controls-to-support-my-children-on-social-media/>

# OPAL UPDATES



All staff have now attended training and we have created our 'zones' in the playground that will have different purposes.

As mentioned last week, one of the first resources we will be introducing is cardboard boxes.

Therefore, please do not throw out any delivery boxes—we will take them off your hands now and forever more! Feel free to send your child in with them any day of the week!

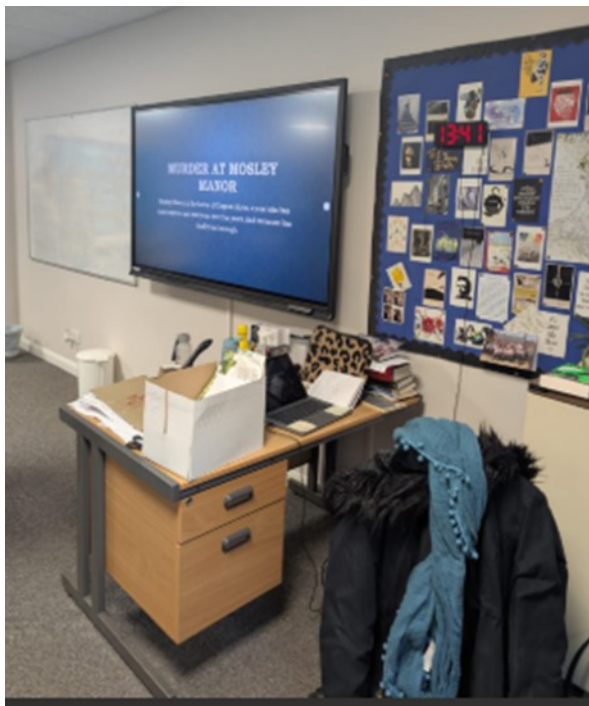
Additionally, we will be introducing a mud-kitchen area soon as well, so are on the lookout for unwanted kitchen utensils, pallets and pots and pans that are no longer of use!

# SPOTLIGHT ON YEAR 6

## Y6 enrichment activity

Year 6 recently stepped into the world of crime-solving during an exciting enrichment trip to Woodbridge School for a “Murder Mystery with a Twist” workshop. The challenge? To create all the evidence themselves! The children investigated the mysterious death of a prestigious local poet, developing suspects, motives and – to their shock – revealing the culprit to be his housekeeper. Working alongside the English department, pupils wrote with real purpose and creativity, producing witness statements, blog entries, detective notes, interviews and even poetry to build their case.

With fantastic support from dedicated English A-level students, the children made full use of the school’s impressive computer facilities to type and print their carefully crafted evidence. Armed with their finished folders, they returned to present the case to our Head of School, Mr McGill, who now faces the ultimate challenge: can he solve the mystery using only Year 6’s evidence? It was a brilliant afternoon of imagination, collaboration and high-quality writing — and one the children will not soon forget!



# ANNA ABLITT FUNDRAISING

[https://stelizabethhospice.enthuse.com/pf/colin-ablitt?fbclid=IwdGRjcAQMxT5leHRuA2F1bQlxMQBzcnRjBmFwcF9pZAo2NjI4NTY4Mzc5AAEeCCbxd\\_9bn3epM0g1PptfLwhj80d\\_n0eHPnv3aB0LOqaLcOTOqpB18ZLAQ7k\\_aem\\_Zi2X38XFS1zl\\_QPUOxL10w](https://stelizabethhospice.enthuse.com/pf/colin-ablitt?fbclid=IwdGRjcAQMxT5leHRuA2F1bQlxMQBzcnRjBmFwcF9pZAo2NjI4NTY4Mzc5AAEeCCbxd_9bn3epM0g1PptfLwhj80d_n0eHPnv3aB0LOqaLcOTOqpB18ZLAQ7k_aem_Zi2X38XFS1zl_QPUOxL10w)

Please find a link above to a memorial skydive planned by our former chef Anna's husband Colin. Anna sadly lost her battle with cancer last year.

The screenshot shows a fundraising page titled "Anna's memorial skydive" on the Enthuse platform. The page features a grid of six images: a woman being cared for, a woman with a dog, a woman at a table, a man playing a guitar, a woman with a man, and a woman in a chair. A progress indicator shows 38% funded towards a £1,000 target, with £379 raised from 16 donors. A "Donate" button is visible, along with social sharing options.

**Anna's memorial skydive**

Search for a friend or appeal

**38%**  
Funded

**£1,000** Target  
£379 Raised so far by 16 Donors

**Share this page:**

**Colin Ablitt**  
My Story

As most will know, my wonderful wife Anna sadly lost her battle with cancer in August of 2025. She had battled the illness for over 12 years. The treatment that she received at St Elizabeth hospice was truly amazing. I have decided to take

# LUNCHTIME COMPANY

LUNCHTIME CO <sup>®</sup>		WEEK 1 MENU				
		WEEKS: 03/11, 24/11, 15/12, 19/01, 09/02, 09/03				
	MONDAY	TUESDAY	WEDNESDAY	THURSDAY	FRIDAY	
<b>MAIN MEAL</b>	Meat Pizza served with Cubed Potatoes & Spaghetti Hoops	Hot Dog served with Jacket Wedges, Crispy Salad Sticks & a Selection of Sauces	Crispy Topped Shepherd's Pie served with Seasonal Vegetables	Roast Chicken served with Potatoes, Yorkshire Pudding, Carrots, Cauliflower and Gravy	Fish Fingers served with Chips, Garden Peas or Baked Beans & Ketchup	
<b>MEAT FREE</b>	Cheese & Tomato Pizza served with Cubed Potatoes & Spaghetti Hoops	Quorn Dog served with Jacket Wedges, Crispy Salad Sticks & a Selection of Sauces	Crispy Topped Shepherdless Pie served with Seasonal Vegetables	Cheese & Potato Pie served with Yorkshire Pudding, Carrots, Cauliflower and Gravy	Vegetable Nuggets served with Chips, Garden Peas or Baked Beans & Ketchup	
<b>PASTA &amp; JACKETS</b>	Jacket Potato with Choice of Toppings served with Fresh Salad	Jacket Potato with Choice of Toppings served with Fresh Salad	Jacket Potato with Choice of Toppings served with Fresh Salad	Jacket Potato with Choice of Toppings served with Fresh Salad	Jacket Potato with Choice of Toppings served with Fresh Salad	
<b>DESSERTS</b>	Choose One of Our Fabulous Desserts Apple & Winter Berry Crumble Fruity Jelly Fresh Fruit Pot	Choose One of Our Fabulous Desserts Jam & Coconut Sponge Fruit Yoghurt & Coulis Fresh Fruit Pot	Choose One of Our Fabulous Desserts Oat & Raisin Cookie Fruity Jelly Fresh Fruit Pot	Choose One of Our Fabulous Desserts Caramel Mousse with Bananas Fruit Yoghurt & Coulis Fresh Fruit Pot	Choose One of Our Fabulous Desserts Vanilla Ice-cream & Fruit Sauce Fruity Jelly Fresh Fruit Pot	

Please see above for next week's menu.

## Meal of the week:

We would definitely recommend Tiff's Fish and Chip Fridays!

Remember that a jacket potato is available everyday.

# SPRING SPORTS CLUBS



The poster features a group of five children in school uniforms on a grassy field. A circular logo in the top left corner contains the text 'EXTRACURRICULAR CLUBS' around a smiley face with 'XC' inside. The main title 'EXTRACURRICULAR CLUBS AT YOUR SCHOOL' is written in large, bold, white letters on a purple background. Below the title is a table with five columns: Day, Activity, Year(s), Time, and Price. The table lists three activities: Dodgeball on Monday, Gymnastics on Tuesday, and Fencing on Thursday, all for years R-6 and 15.20-16.20, each priced at £55. At the bottom left is a QR code with the text 'BOOK TODAY!' below it. At the bottom right are three icons: a target, a t-shirt with the number '1', and a heart with the text 'I LOVE PE'.

Day:	Activity:	Year(s):	Time:	Price
Monday	Dodgeball	R-6	15.20-16.20	£55
Tuesday	Gymnastics	R-6	15.20-16.20	£55
Thursday	Fencing	3-6	15.20-16.20	£55

**BOOK TODAY!**

**I LOVE PE**

## **SPORT UPDATES**

### Upcoming competitions

Y5 Girl's football—9th March

Swimming gala—20th March

Y5/6 Cross Country—25th March

**We have entered the London Mini  
Marathon—more information to follow!**

Junior Parkrun: Check out your local Junior  
Parkrun at 9am on Sunday morning.

Local options include Christchurch Park,  
Kesgrave and Ravenswood Primary School.

# STARS OF THE WEEK

**Rainbows** – **Amirah** – for showing lots of enthusiasm in Mrs Jone's 'Let's grow club' and creating her own grow bags for others to use!

**Celestial class** – **Jenson** for his creative art work this week. Mr Bentley and I were very impressed!

A **special mention** for the Y2s who have worked hard on their Special Agent Tasks

**Flora class** – **Markas** – for being so enthusiastic when we have been learning about the Vikings and using this knowledge to write an excellent biography about Alfred the Great.

Stars of the Week



**Fauna class** – **Noah** – for trying really hard in his reading lessons and persevering when he finds it tricky.

**Ocean class** – **Riley** – for taking care with your work and using neat and careful handwriting in your RE book.

**Mountain class** – **Ellie-May** – for writing a superb narrative using a range of conjunctions.

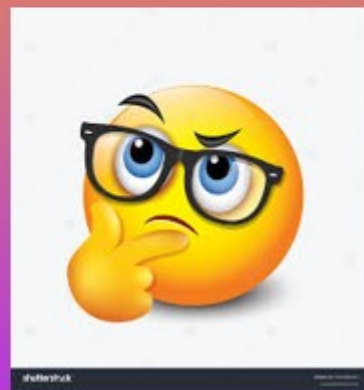
# QUESTION OF THE WEEK

In order to encourage independent thought, critical thinking and the confidence to form opinions, we are going to be introducing a question of the week. This is a philosophical question aimed at the children, but one that has a wider context or meaning and would also be applicable to adults. We want the children to form their own opinions and not be shaped by those of others around them. In addition, we want to open their eyes to the current political and moral issues within the world around them.

Therefore, the question will be posed in Celebration Assembly every Friday and will feature here, but most importantly, it will not be answered by adults in school. Instead, we want children to arrive at their own conclusions and be confident in their own assertions, without influence or bias.

## Question of the week

- Would the world be better without unpleasant feelings?



# Term Dates 2025-2026

## Autumn Term 2025

*Staff Professional Day - Monday 1st September*

*Staff Professional Day - Tuesday 2nd September*

Term Commences - Wednesday 3rd September

Half Term - Monday 27th October to Friday 31st October

*Staff Professional Day – Monday 3<sup>rd</sup> November*

Term Ends - Friday 19th December

## Spring Term 2026

*Staff Professional Day - Monday 5th January*

Term commences -Tuesday 6th January

Half Term - Monday 16th February to Friday 20th February

Term Ends - Friday 27th March

## Summer Term 2026

Term commences - Monday 13th April

*May Bank Holiday - Monday 4th May*

Half Term - Monday 25th May to Friday 29th May

Term Ends - Friday 17th July

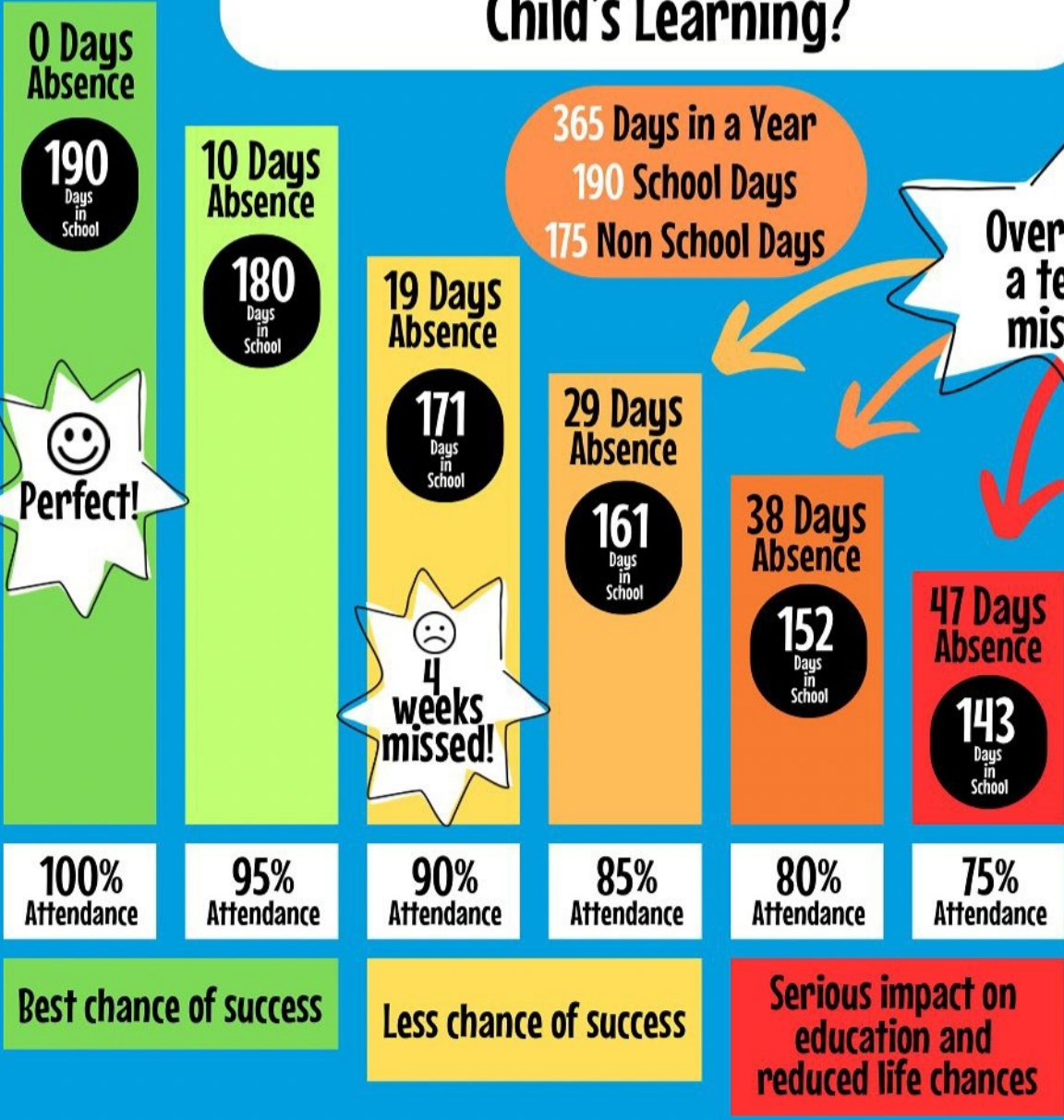
*Staff Professional Day – Monday 20<sup>th</sup> July*

# How Does School Attendance Affect a Child's Learning?

365 Days in a Year  
190 School Days  
175 Non School Days

Over half a term missed!

Having 90% over 5 school years, is half a school year's work missed!



100% Attendance

95% Attendance

90% Attendance

85% Attendance

80% Attendance

75% Attendance

Best chance of success

Less chance of success

Serious impact on education and reduced life chances