

**Pope Leo XIV**

"Yes, Jesus is God's song of love for humanity," he said. "Let us listen to this song! Let us learn it well, so that we too can sing it with our lives."



Dear Parents and Carers,

Thank you to all parents and children who donated today for our NSPCC Number Day. There were a range of fantastic costumes and clothes featuring numbers! Children have also been completing a range of number and Maths activities in class.

Additionally, thank you to all parents who attended our Candlemas liturgy on Monday – this was a lovely assembly led by our Y5/6 GIFT team members.

Our Chess team participated in a competition at Woodbridge School this week, As one of the only state schools and playing against Y8 children in several matches, they did incredibly well and this was a fantastic experience! Thank you to Mrs Harvey for accompanying them – we are very proud of the entire Year 6 team.

Our Y4 basketball team also participated in the Develop Basketball festival this week and played very well, thoroughly enjoying themselves.

Next week sees the start of our OPAL journey, which we are very excited about. They will be in to lead staff training and audit our current play. Year 6 also have a Murder Mystery enrichment afternoon at Woodbridge School, which sounds very exciting!

Wishing everyone a lovely weekend.

Kind regards,

Mr McGill and Mrs Berry

Our Gospel Values

Creativity

Courage

Forgiveness



Generosity



Humility

Joy

Perseverance

Stewardship

Executive Headteacher

Mrs Berry

Head of School

Mr McGill

SENCO

Mr Bentley

Our Classes

Rainbows Miss Aldous
Mrs Iannelli

Celestial Mrs Thackeray
Ms Abbott
Mrs Durston

Class 3 Mr Rolfe
Mrs Harvey
Mrs Nwafor

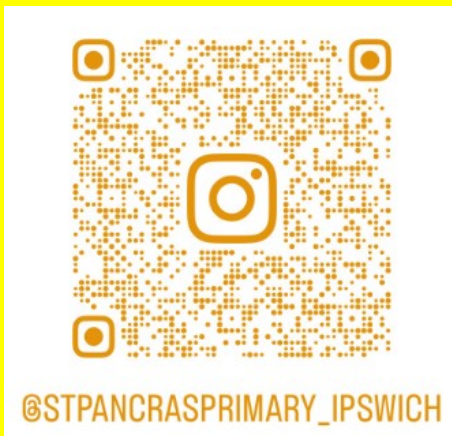
Class 4 Mrs Crowther
Mrs Katkuniene

Class 5 Miss
Pursehouse

Ms Borley

Class 6 Mrs Jones
Mrs Smith
Mrs Tella

Please follow our newly resurrected Instagram page. Content will be posted regularly to here and Facebook!

**Sustainability focus of the week:**

Pick up litter and avoid dropping litter



SPRING TERM DATES

Below are some key dates for the diary

10th February—Year 6 Enrichment activity at Woodbridge School

10th February—start of our OPAL journey

13th February—House point prize for winning house—extra break

17th February—Shrove Tuesday

18th February—Ash Wednesday—start of Lent

3rd March—Class photos

5th March—World Book Day and Westend Workshop

12th March—Y3/Celestial attending 10am Mass

13th March—Mother Figure morning

13th March—Y4 Robotics workshop at Woodbridge School

19th March—Rainbows and Year 6 attending 10am Mass

24th and 26th March—Parent Consultation Evenings

26th March—Year 4 and Year 3 attending 10am Mass / Passion performance to parents -14:00

27th March—House point prize for winning house—film afternoon

ADMISSION APPEALS PANEL MEMBERS

Volunteers Sought to Support School Admission Appeals

The Diocese of East Anglia Schools' Service is seeking volunteers to serve as school admission appeals panel members, helping ensure parents' rights are upheld when a child is not offered a place at their preferred Catholic school.

Panel members play a vital role in considering cases where parents wish to challenge a refusal of admission. Each hearing typically lasts between 20 and 30 minutes, although some may take longer depending on their complexity. During the busy summer term, multiple appeals may be scheduled on the same day, and volunteers may occasionally be asked to sit for two or even three consecutive days. Importantly, panel members are always able to decide their own availability, making this a flexible opportunity suited to those available during school hours.

Appeals may be heard in person or via video conferencing, and volunteers can express a preference for the type of hearings they are comfortable with. All panel members will receive training from the Diocese.

To ensure a balanced and fair process, each panel is made up of both lay members, people without professional involvement in education, and education members, people with experience working in or understanding schools. Individuals cannot sit on panels for schools with which they have a personal connection, for example being a parent, governor or staff member.

Anyone interested in volunteering or finding out more is invited to contact Helen Bates, Assistant Director (Schools' Service), at the Diocese of East Anglia, 21 Ugate, Poringland, Norwich, NR14 7SH, by email at ssc@rcdea.org.uk or by telephone on **01508 495509**.

ONLINE SAFETY

Next week is Internet Safety day.

Below, please find a link to some parental resources.

<https://saferinternet.org.uk/safer-internet-day/safer-internet-day-2026/top-tips-for-parents-and-carers>

LUNCHTIME COMPANY

LUNCHTIME CO [®]		WEEK 1 MENU				
		WEEKS: 03/11, 24/11, 15/12, 19/01, 09/02, 09/03				
	MONDAY	TUESDAY	WEDNESDAY	THURSDAY	FRIDAY	
MAIN MEAL	Meat Pizza served with Cubed Potatoes & Spaghetti Hoops	Hot Dog served with Jacket Wedges, Crispy Salad Sticks & a Selection of Sauces	Crispy Topped Shepherd's Pie served with Seasonal Vegetables	Roast Chicken served with Potatoes, Yorkshire Pudding, Carrots, Cauliflower and Gravy	Fish Fingers served with Chips, Garden Peas or Baked Beans & Ketchup	
MEAT FREE	Cheese & Tomato Pizza served with Cubed Potatoes & Spaghetti Hoops	Quorn Dog served with Jacket Wedges, Crispy Salad Sticks & a Selection of Sauces	Crispy Topped Shepherdless Pie served with Seasonal Vegetables	Cheese & Potato Pie served with Yorkshire Pudding, Carrots, Cauliflower and Gravy	Vegetable Nuggets served with Chips, Garden Peas or Baked Beans & Ketchup	
PASTA & JACKETS	Jacket Potato with Choice of Toppings served with Fresh Salad	Jacket Potato with Choice of Toppings served with Fresh Salad	Jacket Potato with Choice of Toppings served with Fresh Salad	Jacket Potato with Choice of Toppings served with Fresh Salad	Jacket Potato with Choice of Toppings served with Fresh Salad	
DESSERTS	Choose One of Our Fabulous Desserts Apple & Winter Berry Crumble Fruity Jelly Fresh Fruit Pot	Choose One of Our Fabulous Desserts Jam & Coconut Sponge Fruit Yoghurt & Coulis Fresh Fruit Pot	Choose One of Our Fabulous Desserts Oat & Raisin Cookie Fruity Jelly Fresh Fruit Pot	Choose One of Our Fabulous Desserts Caramel Mousse with Bananas Fruit Yoghurt & Coulis Fresh Fruit Pot	Choose One of Our Fabulous Desserts Vanilla Ice-cream & Fruit Sauce Fruity Jelly Fresh Fruit Pot	

Please see above for next week's menu.

Meal of the week:

We would definitely recommend Tiff's pizza on Monday. Meat and vegetarian options are available and both are absolutely delicious!

SPRING 1 SPORTS CLUBS



The poster features a group of five children in school uniforms standing on a grassy field. One child in the center is holding a colorful ball. In the top left corner, there is a circular logo with 'XC' and a smiley face, surrounded by the text 'EXTRACURRICULAR CLUBS'. The main title 'EXTRACURRICULAR CLUBS AT YOUR SCHOOL' is written in large, bold, white letters on a purple background. Below the title is a table with five columns: Day, Activity, Year(s), Time, and Price. The table lists three clubs: Dodgeball on Monday, Gymnastics on Tuesday, and Fencing on Thursday, all for years R-6 and 15.20-16.20, with a price of £55. At the bottom left, there is a QR code and the text 'BOOK TODAY!'. At the bottom right, there are icons for a target, a t-shirt with the number '1', and the text 'I ♥ PE'.

Day:	Activity:	Year(s):	Time:	Price
Monday	Dodgeball	R-6	15.20-16.20	£55
Tuesday	Gymnastics	R-6	15.20-16.20	£55
Thursday	Fencing	3-6	15.20-16.20	£55

BOOK TODAY!

I ♥ PE

SPORT UPDATES

Upcoming competitions

Year 3 Girl's football—6th March

Y5 Girl's football—9th March

Swimming gala—20th March

Y5/6 Cross Country—25th March

Junior Parkrun: Check out your local Junior Parkrun at 9am on Sunday morning.

Local options include Christchurch Park, Kesgrave and Ravenswood Primary School.

We've heard lots of fantastic Parkrun stories and are looking forward to hearing more!

STARS OF THE WEEK

Rainbows – **Isabel** – for showing a good understanding of more and less than in her Maths work this week. Keep up the great work!

Celestial class – **Mabel** for her focus and neatness when sewing her design in DT. I was very impressed!

Flora class – **Akachi** – for fantastic participation in PE this week, working with his partner to create an excellent routine in unison with his partner.

Stars of the Week



Fauna class – **Oliver** – for working really hard in his assessment this week – I was really impressed!

Ocean class – **Maxy** – for showing a noticeable improvement in focus, listening carefully to adults, and following instructions consistently during lessons.

Mountain class – **Mila** – for writing an amazing narrative using beautiful language!

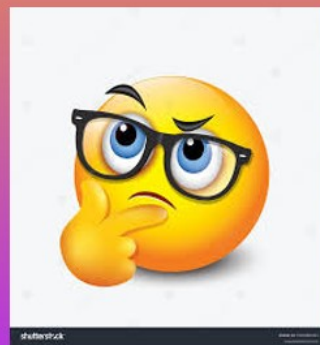
QUESTION OF THE WEEK

In order to encourage independent thought, critical thinking and the confidence to form opinions, we are going to be introducing a question of the week. This is a philosophical question aimed at the children, but one that has a wider context or meaning and would also be applicable to adults. We want the children to form their own opinions and not be shaped by those of others around them. In addition, we want to open their eyes to the current political and moral issues within the world around them.

Therefore, the question will be posed in Celebration Assembly every Friday and will feature here, but most importantly, it will not be answered by adults in school. Instead, we want children to arrive at their own conclusions and be confident in their own assertions, without influence or bias.

Question of the week:

- Should we always say how we feel?



Term Dates 2025-2026

Autumn Term 2025

Staff Professional Day - Monday 1st September

Staff Professional Day - Tuesday 2nd September

Term Commences - Wednesday 3rd September

Half Term - Monday 27th October to Friday 31st October

Staff Professional Day – Monday 3rd November

Term Ends - Friday 19th December

Spring Term 2026

Staff Professional Day - Monday 5th January

Term commences -Tuesday 6th January

Half Term - Monday 16th February to Friday 20th February

Term Ends - Friday 27th March

Summer Term 2026

Term commences - Monday 13th April

May Bank Holiday - Monday 4th May

Half Term - Monday 25th May to Friday 29th May

Term Ends - Friday 17th July

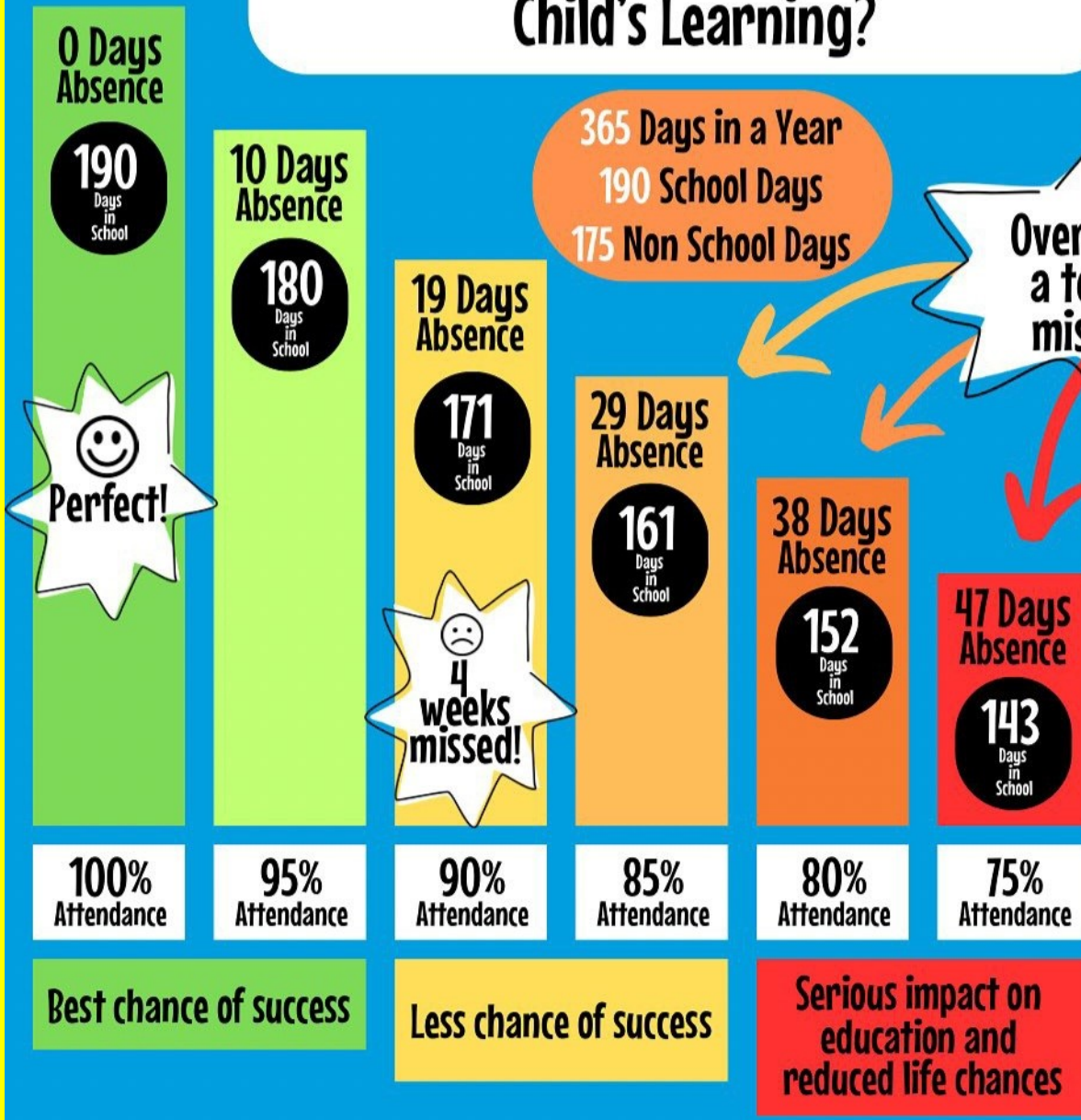
Staff Professional Day – Monday 20th July

How Does School Attendance Affect a Child's Learning?

365 Days in a Year
190 School Days
175 Non School Days

Over half a term missed!

Having 90% over 5 school years, is half a school year's work missed!



0 Days Absence

190 Days in School

Perfect!

10 Days Absence

180 Days in School

19 Days Absence

171 Days in School

4 weeks missed!

29 Days Absence

161 Days in School

38 Days Absence

152 Days in School

47 Days Absence

143 Days in School

100% Attendance

95% Attendance

90% Attendance

85% Attendance

80% Attendance

75% Attendance

Best chance of success

Less chance of success

Serious impact on education and reduced life chances