



Pope Leo XIV

"Yes, Jesus is God's song of love for humanity," he said. "Let us listen to this song! Let us learn it well, so that we too can sing it with our lives."



Dear Parents and Carers,

Thank you for all OPAL donations so far—we have accumulated some great resources in the last week, but are always looking for more!

We would particularly now like to request any old dressing-up clothes or rails, as well as unwanted small-world toys.

Thank you to parents who attended the parent forum this morning, which focused on attendance. There were some useful points raised and some valuable feedback, which should lead to a few small changes in the next few months—thank you. The parent forum will take place every half-term and will have a different educational theme each time—suggestions are always welcome.

PTA AGM: The PTA AGM will take now place after Celebration Assembly on Friday 30th January at 09:30. We warmly invite all parents to attend and there will be coffee and biscuits. This is the perfect opportunity to hear about the year's activity, as well as potentially offer support! We look forward to seeing you there!

Wishing everyone a lovely weekend.

Kind regards,

Mr McGill and Mrs Berry

Our Gospel Values

- Creativity
- Courage
- Forgiveness
- Generosity
- Humility
- Joy
- Perseverance
- Stewardship

Executive Headteacher

Mrs Berry

Head of School

Mr McGill

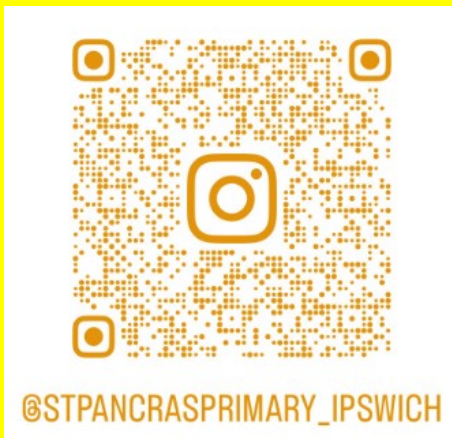
SENCO

Mr Bentley

Our Classes

- Rainbows Miss Aldous
Mrs Iannelli
- Celestial Mrs Thackeray
Ms Abbott
Mrs Durston
- Class 3 Mr Rolfe
Mrs Harvey
Mrs Nwafor
- Class 4 Mrs Crowther
Mrs Katkuniene
- Class 5 Miss Pursehouse
Ms Borley
- Class 6 Mrs Jones
Mrs Smith
Mrs Tella

Please follow our newly resurrected Instagram page. Content will be posted regularly to here and Facebook!



Sustainability focus of the week:

- St Pancras will save energy by.....
- Turning off lights
 - Turning off plugs and electrical appliances
 - Turning off taps
 - Closing doors and windows
- How can you save energy at home?!



SPRING TERM DATES

Below are some key dates for the diary

30th January— PTA AGM—all parents warmly invited

6th February—NSPCC Number Day

10th February—Year 6 Enrichment activity at Woodbridge School

10th February—start of our OPAL journey

13th February—House point prize for winning house—extra break

17th February—Shrove Tuesday

18th February—Ash Wednesday—start of Lent

3rd March—Class photos

5th March—World Book Day and Westend Workshop

13th March—Mother Figure morning

13th March—Y4 Robotics workshop at Woodbridge School

24th and 26th March—Parent Consultation Evenings

27th March—House point prize for winning house—film afternoon

ADMISSION APPEALS PANEL MEMBERS

Volunteers Sought to Support School Admission Appeals

The Diocese of East Anglia Schools' Service is seeking volunteers to serve as school admission appeals panel members, helping ensure parents' rights are upheld when a child is not offered a place at their preferred Catholic school.

Panel members play a vital role in considering cases where parents wish to challenge a refusal of admission. Each hearing typically lasts between 20 and 30 minutes, although some may take longer depending on their complexity. During the busy summer term, multiple appeals may be scheduled on the same day, and volunteers may occasionally be asked to sit for two or even three consecutive days. Importantly, panel members are always able to decide their own availability, making this a flexible opportunity suited to those available during school hours.

Appeals may be heard in person or via video conferencing, and volunteers can express a preference for the type of hearings they are comfortable with. All panel members will receive training from the Diocese.

To ensure a balanced and fair process, each panel is made up of both lay members, people without professional involvement in education, and education members, people with experience working in or understanding schools. Individuals cannot sit on panels for schools with which they have a personal connection, for example being a parent, governor or staff member.

Anyone interested in volunteering or finding out more is invited to contact Helen Bates, Assistant Director (Schools' Service), at the Diocese of East Anglia, 21 Ugate, Poringland, Norwich, NR14 7SH, by email at ssc@rcdea.org.uk or by telephone on **01508 495509**.

SPOTLIGHT ON YEAR 4

Fauna Class have had a very busy and exciting start to the Spring term!

In Writing, we have been thinking about stories from other cultures and discussing how authors include cultural details within their writing. The children are using this learning to plan and write their own stories.

During Reading, we have been thoroughly enjoying Varjak Paw. The children are completely hooked and eager to keep reading to discover what happens next.

In RE, we have been learning about the qualities of a Messiah and exploring how Jesus fits this role. The class worked collaboratively to create a "Messiah chain" highlighting these important qualities and demonstrating excellent teamwork and reflection.

In History, we have started our new topic on the rise and fall of the Roman Empire. The children are beginning to explore how the empire grew, how it was ruled and the reasons it eventually declined.

It has been wonderful to see Fauna Class so engaged and enthusiastic across all areas of learning.

ONLINE SAFETY

Online Safety & Sharing Photos of Children

You may have seen recent news coverage about AI tools such as *Grok* that can generate inappropriate imagery from everyday photos. This raises important considerations about how we share images of our children online.

📄 *The Guardian* article gives a useful overview:

https://www.theguardian.com/technology/2026/jan/09/grok-image-generator-outcry-sexualised-ai-imagery?utm_source=chatgpt.com

When sharing photos online, please think about:

- Using **closed and trusted groups** rather than public feeds.
-
- Checking and tightening your **privacy settings**.
-
- Avoiding identifiable school uniforms, locations or routines.

For further guidance on managing children's online experiences, see *Internet Matters*:

https://www.internetmatters.org/digital-matters/?utm_source=chatgpt.com

SPRING 1 SPORTS CLUBS



The poster features a group of five children in school uniforms standing on a grassy field. One child in the center is holding a colorful ball. The background is a bright, sunny outdoor scene with trees and a blue sky. The text 'EXTRACURRICULAR CLUBS AT YOUR SCHOOL' is prominently displayed in a purple and white font. A table below lists the clubs: Dodgeball on Mondays, Gymnastics on Tuesdays, and Fencing on Thursdays, all for years R-6 from 15.20 to 16.20 for £55. The poster also includes a QR code, a 'BOOK TODAY!' call to action, and icons for a target, 'I ♥ PE', and a sports jersey.

EXTRACURRICULAR CLUBS

EXTRACURRICULAR CLUBS AT YOUR SCHOOL

Day:	Activity:	Year(s):	Time:	Price
Monday	Dodgeball	R-6	15.20-16.20	£55
Tuesday	Gymnastics	R-6	15.20-16.20	£55
Thursday	Fencing	3-6	15.20-16.20	£55

BOOK TODAY!

I ♥ PE



SPORT UPDATES

Upcoming competitions

Year 4 Basketball—4th Feb

Year 3 Girl's football—6th March

Y5 Girl's football—9th March

Swimming gala—20th March

Junior Parkrun: Check out your local Junior Parkrun at 9am on Sunday morning.

Local options include Christchurch Park, Kesgrave and Ravenswood Primary School.

We've heard lots of fantastic Parkrun stories and are looking forward to hearing more!

STARS OF THE WEEK

Rainbows – [Noah C](#) – for using Mini Mash with confidence to create an astronaut picture in our 'Space' work this week on the [Ipad](#). Well done!

Celestial class – [Destiny](#) for her perseverance whilst sewing in our DT project. She kept calm even when she found it tricky rather than getting frustrated.

Flora class – [Freddie](#) –for showing excellent knowledge of multiplication and division in mathematics and applying this to solve challenging problems.

Stars of the Week



Fauna class – [Tamala](#) for showing great progress in her times tables – keep up the good work!

Ocean class – [Jaylen](#) – for great focus within lessons.

Mountain class – [Albie](#) – for consistently setting a good example to his peers - reflecting excellent learning behaviours.

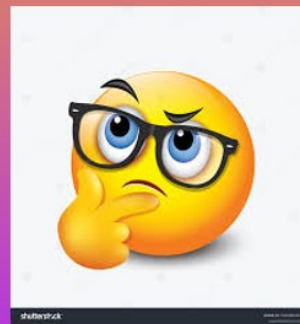
QUESTION OF THE WEEK

In order to encourage independent thought, critical thinking and the confidence to form opinions, we are going to be introducing a question of the week. This is a philosophical question aimed at the children, but one that has a wider context or meaning and would also be applicable to adults. We want the children to form their own opinions and not be shaped by those of others around them. In addition, we want to open their eyes to the current political and moral issues within the world around them.

Therefore, the question will be posed in Celebration Assembly every Friday and will feature here, but most importantly, it will not be answered by adults in school. Instead, we want children to arrive at their own conclusions and be confident in their own assertions, without influence or bias.

Question of the week:

- What would happen if nobody needed money?



Term Dates 2025-2026

Autumn Term 2025

Staff Professional Day - Monday 1st September

Staff Professional Day - Tuesday 2nd September

Term Commences - Wednesday 3rd September

Half Term - Monday 27th October to Friday 31st October

Staff Professional Day – Monday 3rd November

Term Ends - Friday 19th December

Spring Term 2026

Staff Professional Day - Monday 5th January

Term commences -Tuesday 6th January

Half Term - Monday 16th February to Friday 20th February

Term Ends - Friday 27th March

Summer Term 2026

Term commences - Monday 13th April

May Bank Holiday - Monday 4th May

Half Term - Monday 25th May to Friday 29th May

Term Ends - Friday 17th July

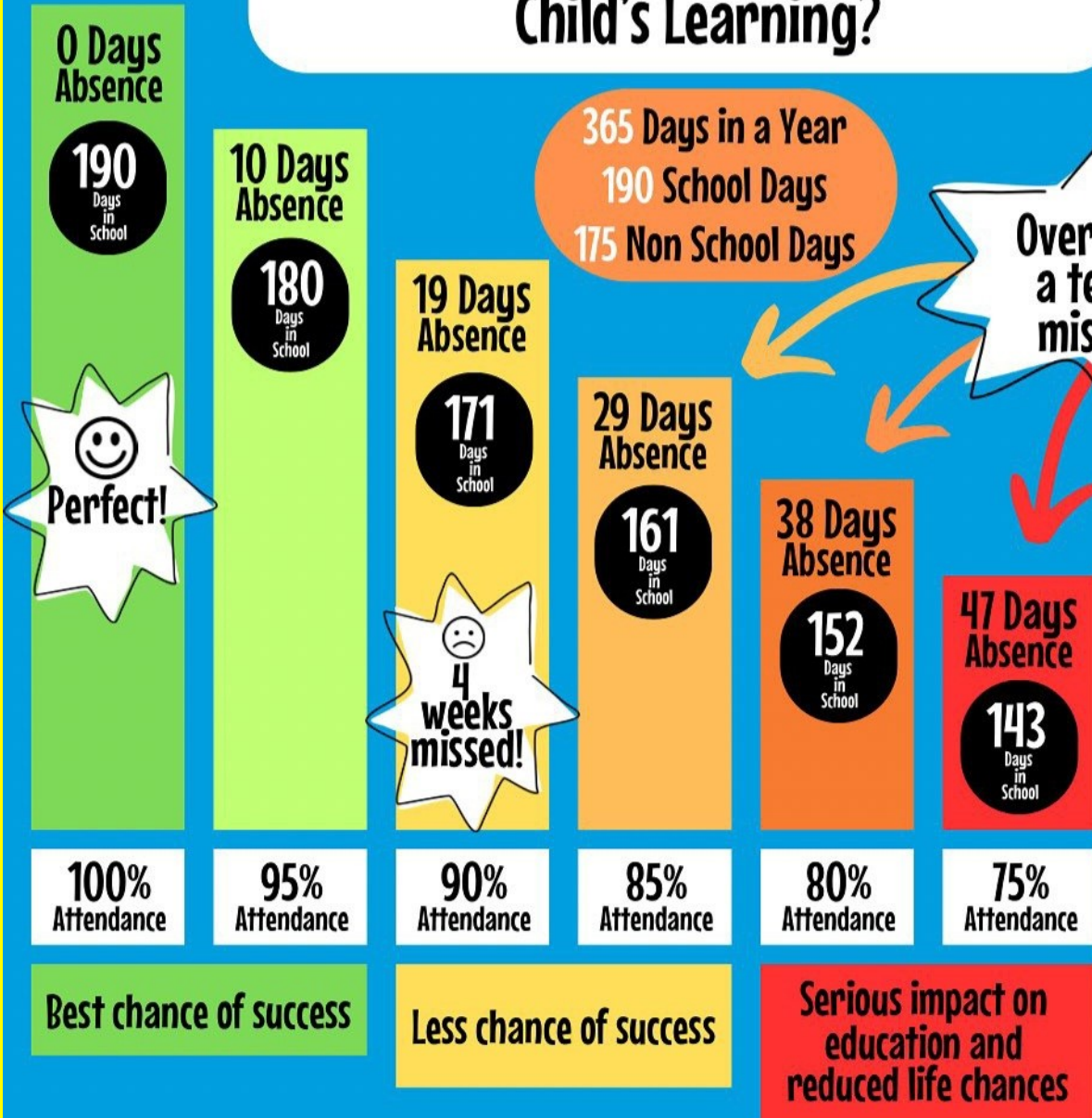
Staff Professional Day – Monday 20th July

How Does School Attendance Affect a Child's Learning?

365 Days in a Year
190 School Days
175 Non School Days

Over half a term missed!

Having 90% over 5 school years, is half a school year's work missed!



0 Days Absence

190 Days in School



10 Days Absence

180 Days in School

19 Days Absence

171 Days in School



29 Days Absence

161 Days in School

38 Days Absence

152 Days in School

47 Days Absence

143 Days in School

100% Attendance

95% Attendance

90% Attendance

85% Attendance

80% Attendance

75% Attendance

Best chance of success

Less chance of success

Serious impact on education and reduced life chances