



**Pope Leo XIV**

*"May the familiar voice of Jesus reach us, and reach everyone, because it is the only one that comes from the future. May he call us by name, prepare a place for us, free us from that sense of helplessness that tempts us to give up on life."*



Dear Parents and Carers,

The Christmas post box is now open and Year 6 will be delivering cards this week. Please remind your children to include surnames and class names – every year, there are a few undeliverable cards!

We look forward to welcoming parents to our two nativity performances – the children have been working hard and it promises to be a fantastic production! Please see Mrs Ransom’s email from last week for start times. We would love to see parents at our carol concert on the final Friday – this will be accompanied by Mr Grealy, who has worked hard with KS2 since October.

The Christmas Bazaar takes place this weekend in the school hall, with a special new games room provided by Year 6, who will be running some of the stalls themselves! We would love to see you there.

Finally, shoe-box donations for the shoe-box appeal can be left in the foyer. Please see P10 for more details!

Kind regards,

Mr McGill and Mrs Berry

**Our Gospel Values**

- Creativity
- Courage
- Forgiveness
- Generosity
- Humility
- Joy
- Perseverance
- Stewardship

**Executive Headteacher**

Mrs Berry

**Head of School**

Mr McGill

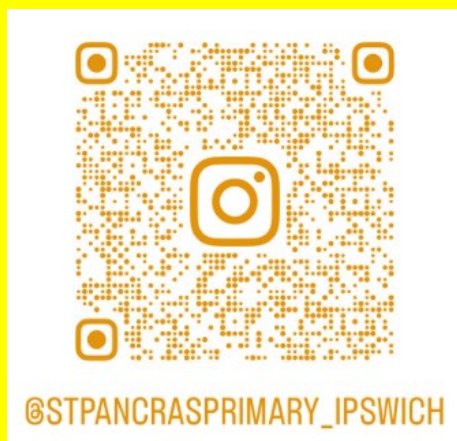
**SENCO** \_\_\_\_\_ Mr

Bentley

**Our Classes**

- Rainbows Miss Aldous  
Mrs Iannelli
- Celestial Mrs Thackeray  
Ms Abbott  
Mrs Durston
- Class 3 Mr Grimwood  
Mrs Harvey  
Mrs Nwafor
- Class 4 Mrs Crowther  
Mrs Katkuniene
- Class 5 Miss  
Pursehouse  
Ms Borley
- Class 6 Mrs Jones  
Mrs Smith  
Mrs Tella

**Please follow our newly resurrected Instagram page. Content will be posted regularly to here and Facebook!**



**Sustainability focus of the week:**

To ensure the correct rubbish is recycled in the blue recycling bins.



# AUTUMN TERM DATES

Below are some key dates for the diary

8th December—Nativity dress rehearsal to school

9th December—Nativity performance

10th December—Nativity performance

13th December—Christmas bazaar (11am –2pm)

16th December—Christmas Jumper and Christmas Dinner day

19th December—House Points prize 2—Non-uniform day

19th December—KS2 Carol Concert

5th January—INSET day

6th January—start of Spring term

3rd March—Class photos

5th March—World Book Day and Westend Workshop

13th March—Mother Figure morning

# SPORTS CLUBS



## EXTRACURRICULAR CLUBS AT YOUR SCHOOL

Day:	Activity:	Year(s):	Time:	Price
Monday	Basketball	R-6	15:20-16.20	£5.50
Tuesday	Gymnastics	R-6	15:20-16.20	£5.50
Thursday	Archery	1-6	15:20-16.20	£5.50



**BOOK TODAY!**



# SCHOOL LUNCH MENU FOR NEXT WEEK

LUNCHTIME CO <sup>®</sup>		WEEK 3 MENU					SIP	
		WEEKS: 17/11, 08/12, 12/01, 02/02, 02/03, 23/03						
	MONDAY	TUESDAY	WEDNESDAY	THURSDAY	FRIDAY			
MAIN MEAL	Meat Wholemeal Pizza served with Baked Baby Potatoes, Peas & Sweetcorn	Chicken Burger served with Selection of Sauces Potatoes Wedges & Crunchy Veg Sticks	Beef Bolognese served with Spaghetti, Wholemeal Garlic & Herb bread, Seasonal Vegetables	Sausage Pork served with Potatoes, Carrots, Cabbage, Yorkshire Pudding and Gravy	Fish Fingers served with Chips, Garden Peas or Baked Beans & Ketchup			
MEAT FREE	Margherita Wholemeal Pizza served with Baked Baby Potatoes, Peas & Sweetcorn	Vegetable Burger served with Selection of Sauces Potatoes Wedges & Crunchy Veg Sticks	Plant Based Bolognese served with Spaghetti, Wholemeal Garlic & Herb bread, Seasonal Vegetables	Quorn Sausage Roast served with Potatoes, Carrots, Cabbage, Yorkshire Pudding and Gravy	Fishless Fish Fingers served with Chips, Garden Peas or Baked Beans & Ketchup			
PASTA & JACKETS	Jacket Potato with Choice of Toppings served with Fresh Salad	Jacket Potato with Choice of Toppings served with Fresh Salad	Jacket Potato with Choice of Toppings served with Fresh Salad	Jacket Potato with Choice of Toppings served with Fresh Salad	Jacket Potato with Choice of Toppings served with Fresh Salad			
DESSERTS	Choose One of Our Fabulous Desserts Sprinkle Cookie Fruity Jelly Fresh Fruit Pot	Choose One of Our Fabulous Desserts Syrup Sponge Fruit Yoghurt & Conis Fresh Fruit Pot	Choose One of Our Fabulous Desserts Chocolate Mousse with Orange Wedge Fruity Jelly Fresh Fruit Pot	Choose One of Our Fabulous Desserts Carrot Cake Fruit Yoghurt & Conis Fresh Fruit Pot	Choose One of Our Fabulous Desserts Victoria Sponge Fruity Jelly Fresh Fruit Pot			



## **SPORT UPDATES**

Junior Parkrun: Check out your local Junior Parkrun at 9am on Sunday morning.

Local options include Christchurch Park, Kesgrave and Ravenswood Primary School.

We've heard lots of fantastic Parkrun stories and are looking forward to hearing more!

# STARS OF THE WEEK

**Rainbows** – **Colton**– for showing lots of worldly knowledge exploring the globe in our 'travelling to the South pole' work. Well done!

**Celestial class** – **Sofia** for always following the school rules and for being an excellent role model to others.

**Flora class** – **Marek** – for working hard in maths and using his number bonds in a range of ways.

Stars of the Week



**Fauna class** – **Tahlia** for always trying her best and showing resilience when faced with tricky maths problems.

**Ocean class** – **Sophia** – for always giving your very best in every lesson and showing a fantastic attitude to learning.

**Mountain class** – **AJ**– for tackling our new multiplying and dividing fractions unit with enthusiasm and determination.

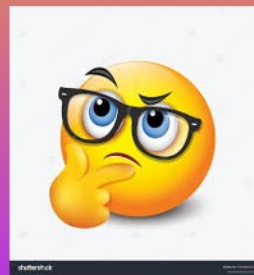
# QUESTION OF THE WEEK

In order to encourage independent thought, critical thinking and the confidence to form opinions, we are going to be introducing a question of the week. This is a philosophical question aimed at the children, but one that has a wider context or meaning and would also be applicable to adults. We want the children to form their own opinions and not be shaped by those of others around them. In addition, we want to open their eyes to the current political and moral issues within the world around them.

Therefore, the question will be posed in Celebration Assembly every Friday and will feature here, but most importantly, it will not be answered by adults in school. Instead, we want children to arrive at their own conclusions and be confident in their own assertions, without influence or bias.

## Question of the week:

- Who should decide what is fair—adults, children, or both?

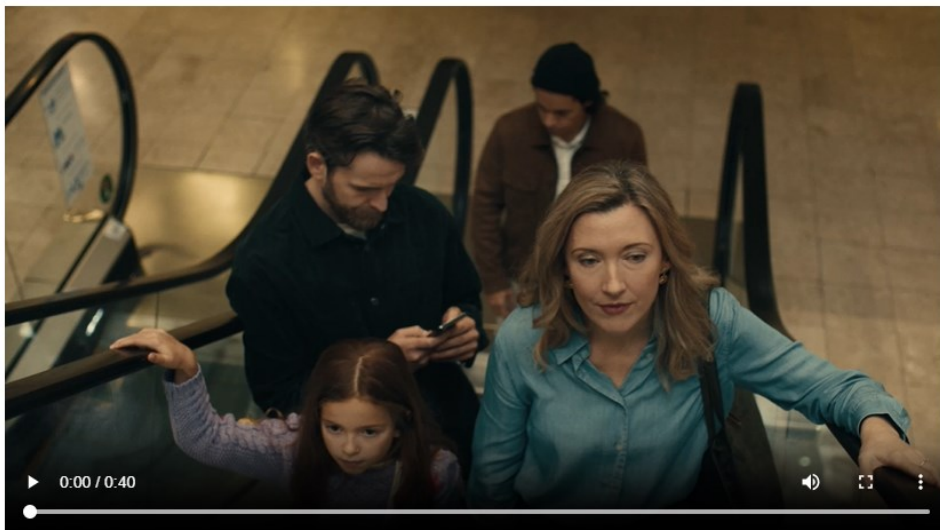


# ONLINE SAFETY

<https://dataprotection.ie/en/children>

You may already have seen the above video on social media this week, but if you haven't, we thoroughly recommend watching. It serves as a stark reminder to all parents to be careful about what we share online.

## “Pause Before You Post” Awareness Campaign



# Term Dates 2025-2026

## Autumn Term 2025

*Staff Professional Day - Monday 1st September*

*Staff Professional Day - Tuesday 2nd September*

Term Commences - Wednesday 3rd September

Half Term - Monday 27th October to Friday 31st October

*Staff Professional Day – Monday 3<sup>rd</sup> November*

Term Ends - Friday 19th December

## Spring Term 2026

*Staff Professional Day - Monday 5th January*

Term commences -Tuesday 6th January

Half Term - Monday 16th February to Friday 20th February

Term Ends - Friday 27th March

## Summer Term 2026

Term commences - Tuesday 14th April

*May Bank Holiday - Monday 4th May*

Half Term - Monday 25th May to Friday 29th May

Term Ends - Friday 17th July

*Staff Professional Day – Monday 20<sup>th</sup> July*

## Ipswich Family Bank

### Christmas Shoe Box Appeal

We are looking for people to support those less fortunate this Christmas by making up shoe boxes or donating a toy or game which can be distributed to those who need a little helping hand to be able to enjoy Christmas this year.

#### What to do :

Find an old shoe box

Pack it with essentials / something exciting

Pop a note in for the person receiving the box

Wrap the shoe box if you wish

Label you box with the child's age and gender

Pass the shoe box on to reception for it to be collected

All shoe boxes should be returned by Friday 12<sup>th</sup>  
December, please leave them in the foyer

*Thank you for taking the time to spread the love this*



# LET'S PROTECT YOUNG PEOPLE FROM ONLINE RADICALISATION

## ■ Online Virtual Sessions for Parents and Carers

Young People are spending significant amounts of unsupervised time online which may increase their risks of susceptibility to grooming and exposure to extremist content.

Seeking to upskill parents and carers of young people who might be exposed to harmful online content, Norfolk Community Safety Partnership and Suffolk County Council are working in partnership with Small Steps to deliver four online sessions aiming to challenge Extreme Right-Wing (ERW) narratives.

The following topics will be covered:

- Understanding the factors that can make individuals more susceptible to extremist ideas
- How to support others and how to get help and make a Prevent Referral
- Understand how extremist groups often exploit digital platforms and the dangers
- What disinformation and misinformation are and highlight the dangers of both
- Highlight the benefits of real-life connections with people
- Signs of radicalisation, how to have difficult conversations and what to do if approached by an extremist online
- Critical thinking and build real-life resilience to extremism
- Connections between the Extreme Right-Wing and mixed ideologies such as the Incel movement and the manosphere
- Interactive gaming activities designed to explore and raise awareness of the methods used by extremists on virtual platforms

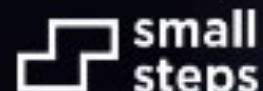


**MON 6 October** at 12.30 PM  
**THUR 16 October** at 12.30 PM  
**WED 22 October** at 5.30 PM  
**TUE 4 November** at 12.30 PM

**CLICK HERE  
TO REGISTER**

If you are worried that someone you know is being radicalised, please contact the Suffolk Customer First team at 0808 800 4005 or Norfolk County Council at 0344 800 8020. If urgent call 999.

You can also share your concerns and seek support and guidance by visiting the [ACT Early website](#), or contacting their support line on 0800 011 3764.



# How Does School Attendance Affect a Child's Learning?

