

ST PANCRAS CATHOLIC PRIMARY SCHOOL

Catch Up Funding Strategy 2020-21

School	St Pancras Catholic Primary School	School Strategy Leader	Lucille Martin
No. of Eligible Pupils	206	Total Allocation	£16,560

1 Teaching

Quality First Teaching – resourcing some classrooms with new interactive whiteboards

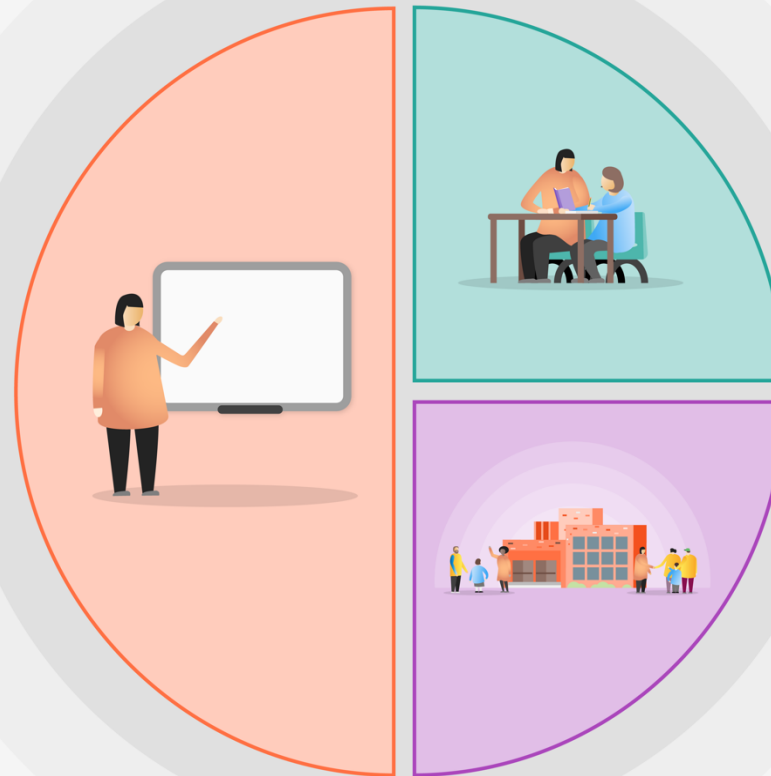
Rebuilding curriculum – Resources bought to support catch up eg. In Phonics, Timestables and Reading Comprehension

Whole school focus on writing

PiXL – assessment and therapies to address gaps in learning.

Ensuring teachers have training and support to provide remote learning

Development of a remote learning platform – Purple Mash and Microsoft Teams



2 Targeted academic support

TA deployment

Additional fixed term TA appointed to support catch up provision

Before, during and after-school targeted catch up groups run by teachers and TAs to support children who have fallen behind as a result of Lockdown, as identified through academic screening and engagement registers.

3 Wider strategies

Purchased additional resources to support home learning.

Motional purchased to support pastoral screening of any pupils where required.

CPD to support Staff wellbeing and spiritual life of the school

1. Teaching

	Identified Pupil Group	Pupil need/s	How were pupil need/s identified?	Chosen action/approach	Evidence and rationale for this choice	Expenditure	Desired Outcome/impact	When measured/staff lead
A	Year 1 Year 2 Year 3 Year 6	Quality first teaching	Sept'20 academic screening of all pupils	Purchase new interactive whiteboards for classrooms where projectors aging and poor quality.	Vital for children to be able to see an IWB from any angle or distance in a classroom in order to fully participate in lessons on return from lockdown.	4 x 4K screens with mounts £5,700	Strong QFT to ensure pupils have the best chance of catching up lost learning	June '21
B	All Pupils	Additional resources to support rebuilding curriculum	Sept'20 academic screening of all pupils	Purchase Schofield and Simms pupil books to support catch up in specific areas eg. Phonics, Timestables, Reading Comprehension and Mental arithmetic	Gaps in learning and lack of practise at home leading to pupils regressing in their knowledge in the areas identified.	£2000	Teachers to use resources to support identified gaps in pupils' knowledge.	June '21

2. Targeted Academic Support

	Identified Pupil Group	Pupil need/s	How were pupil need/s identified?	Chosen action/approach	Evidence and rationale for this choice	Expenditure	Desired Outcome/impact	Staff lead
A	Reception Class	Academic support for phonics acquisition and basic	Baseline assessments	TA targeted group support during school day	Lack of practise at home has resulted in pupils regressing in fine motor/phonics/S&L	£200	Children make good progress and are ready for Year 1	BA

		number skills			and number skills			
B	Year One	Academic support for phonics Bespoke interventions for Phonics, maths and writing	September screening and engagement registers	TA targeted group support during school day	Screening outcomes and lack of engagement during remote learning	£200		ST
C	Year Two	Bespoke interventions for maths and writing	September screening and engagement registers	Catch up TA targeted group support in Year 2 two days a week for Summer Term	Screening outcomes and lack of engagement during remote learning	£2538		EJ and ES
D	Year Three	Bespoke interventions for maths, reading and writing	September screening and engagement registers	Catch up TA targeted group support in Year 3 two days a week for Summer Term	Screening outcomes and lack of engagement during remote learning	£2538		SR
E	Year Four	Bespoke interventions for maths, reading and writing	September screening and engagement registers	Before/after school catch up groups prior to and during Summer Term	Screening outcomes and lack of engagement during remote learning	£400		JH
F	Year Five	Bespoke interventions for maths, reading and writing	September screening and engagement registers	Before/after school catch up groups prior to and during Summer Term	Screening outcomes and lack of engagement during remote learning	£400		BG
G	Year Six	Bespoke interventions for maths, reading and writing	September screening and engagement registers	Before/after school catch up groups prior to and during Summer Term	Screening outcomes and lack of engagement during remote learning	£2538		RM

				Catch up TA targeted group support in Year 6 one day a week for Summer Term				
--	--	--	--	---	--	--	--	--

3. Wider Strategies

	Identified Pupil Group	Pupil need/s	How were pupil need/s identified?	Chosen action/approach	Evidence and rationale for this choice	Expenditure	Desired Outcome/impact	Staff lead
A	Pupils anxious after lockdown and on returning to school	Mental health and anxiety support	Teachers conversations with parents over lockdown period	Individual and group intervention support using Motional	A number of children identified through contact with families during both lockdowns	£100	Additional support available to break down anxiety and ensure pupil attendance	LM
B	Staff team	Wellbeing support	Staff wellbeing survey	CPD on spirituality and reconnecting with Catholic Life of the school	Survey showed staff feeling disconnected from one another and the ethos of the school with the impact of COVID and being kept to bubbles.	£100	Staff have time and guidance to help them reconnect with themselves, each other and the Catholic Life of the school	LM